

How TRACC Enabled Us To Review Our Accessibility

The Issue

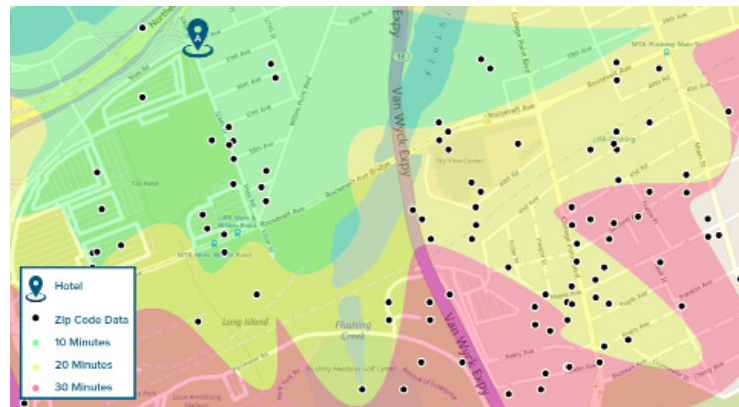
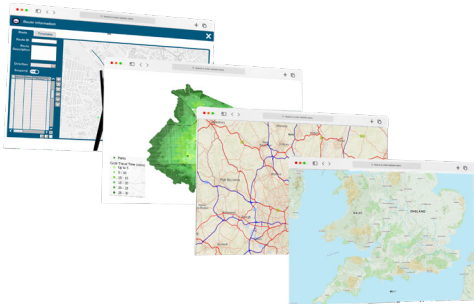
Matthew Wolstenholme, Program Manager of Operational Planning at Ottawa city, found his biggest bugbear was not being able to integrate localised changes on the Transit Network and therefore couldn't uphold his role efficiently for assessing customer journey time and service reliability.



Matthew Wolstenholme
Manager, Service Planning
City of Ottawa

The Solution

Since deploying TRACC, Matthew has been able to run calculations based on relevant criteria for his network, present a supporting case and utilise TRACC for further projects in his pipeline.



Calculate

Run iterative assessments and run re calculations to give peace of mind.



Future-Proofed

As cities PT networks expand, TRACC can facilitate new changes in journey times, route changes for commuters.



Present Results

Dependent on the results of your project, TRACC is there to support your case.



Overflow

The success of TRACC for long-term projects has given us confidence to use on short-term projects too.