

Merseytravel saves time analysing traffic data

About

Merseytravel is the Executive body that provides professional, strategic and operational transport advice to the Liverpool City Region Combined Authority to enable it to make informed decisions. It is also the delivery arm, making transport happen.

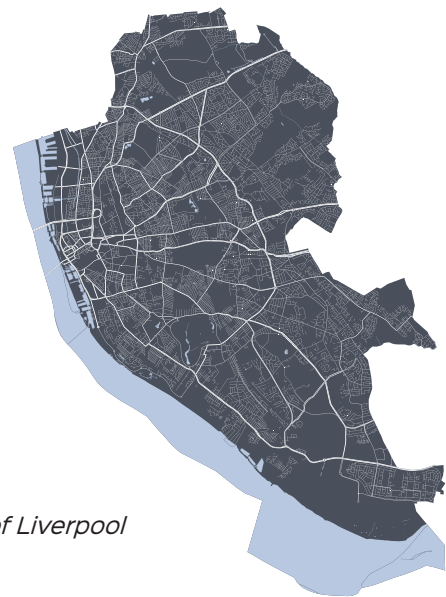
The Geographical Information System (GIS) team at Merseytravel didn't have the right toolset to analyse Trafficmaster data efficiently. They chose to use Highways Analyst software from Basemap to analyse the data quickly and easily.

Analysing journey times previously took weeks, now queries can be run in minutes. Productivity has increased as a result and has saved money through consultancy fees and no hardware requirements.

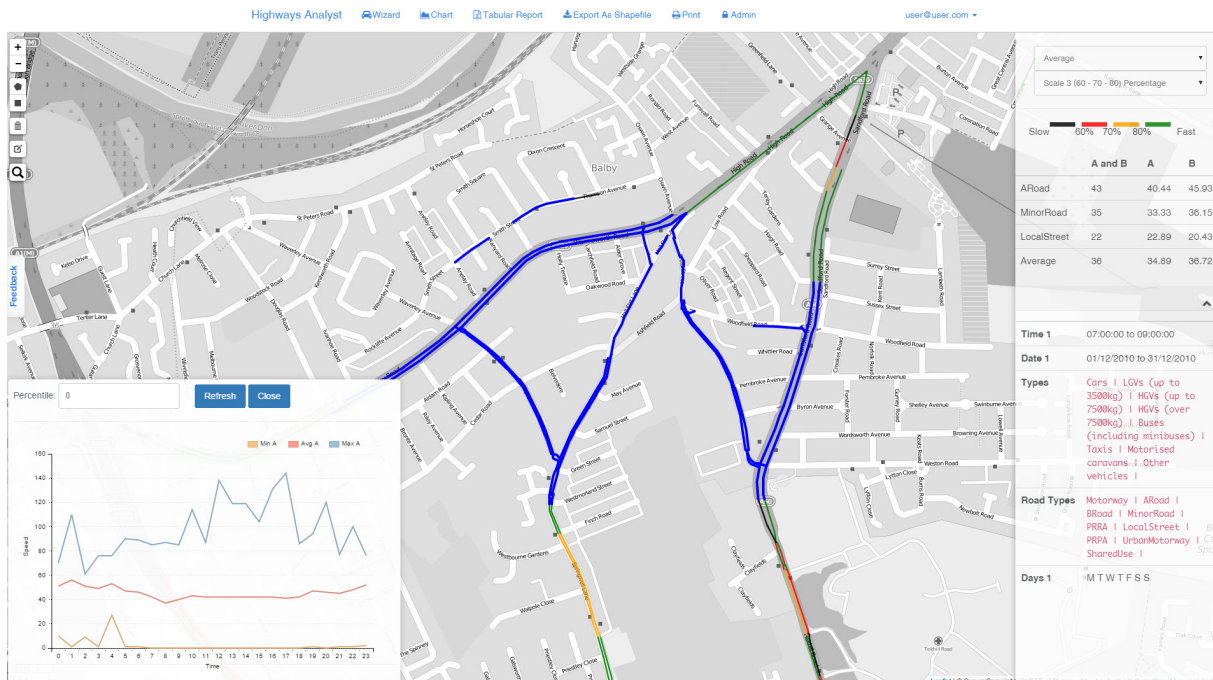
Campaign

"A similar piece of work on journey times along bus corridors using the Trafficmaster data took me about three weeks of work last year, which is a query I can run in a few minutes on Highways Analyst."

Anthony Piccaro, Information & Intelligence Officer, Merseytravel



City of Liverpool



Challenges facing Merseytravel

Anthony Piccaro, Information & Intelligence Officer at Merseytravel, previously spent a lot of time analysing Trafficmaster data. Each road link would need to be found and analysed individually. Laborious data analysis was not an effective use of Piccaro's time and meant that there was a lot of data preparation that was passed to consultants. Pinch points at junctions were previously reported on route by bus operators, which allowed for error.

Highways Analyst is currently analysing bus corridors and discovering pinch points to improve bus journey times for Merseytravel. The software increased productivity by saving +112 hours on one project!

Highways Analyst has reduced the time and cost associated with consultancy work involving journey time studies. Data is exported using individual link information and shows information quickly across the network. It is a cloud based solution with no hardware implications, allowing Piccaro access anytime anywhere.

Benefits

- 1 **More Productivity**
See changes in a glance
- 2 **Quicker Queries**
Run calculations quickly
- 3 **Flexible**
Export in a format that works for multiple system

Overall the analysis will help improve Liverpool City's road network as Merseytravel now have visibility of the past 5 years and can more effectively plan future junction improvements.



01483 688 470

Surrey Technology Centre,
40 Occam Road, Guildford,
Surrey, GU2 7YG

www.basemap.co.uk