

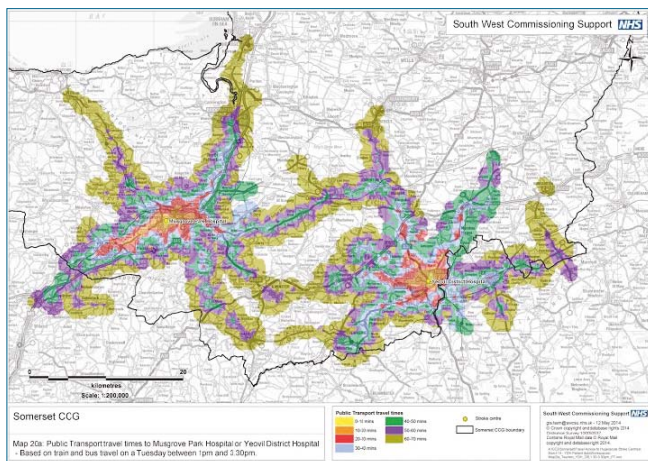
Somerset Stroke Service Review

Using GIS mapping analysis to inform an evidence-based service redesign

In the spring of 2014, Somerset CCG set out to discover how a proposed centralised stroke service, based at Taunton Hospital, would affect the population of Somerset as a whole – a large county measuring 1,330 square miles and 70 miles across.

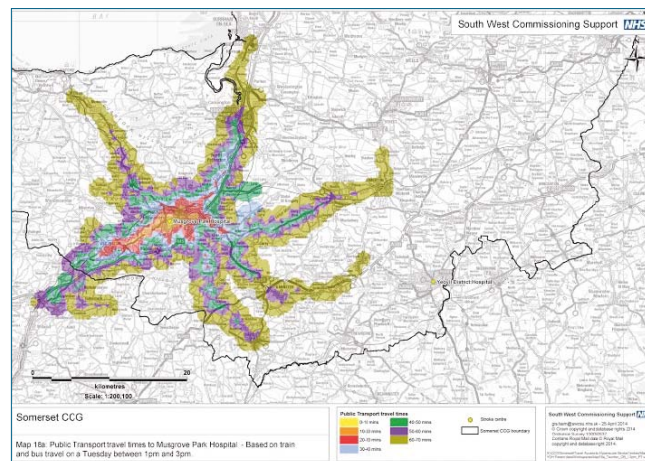


South West Commissioning Support



What were the objectives?

Previously, the service review had assumed that a redesign involving the planned cessation of stroke services at Yeovil Hospital would offer the county's patients clinical benefits, but a sophisticated analytical tool was needed to confirm this.



Therefore the South West Commissioning Support (SWCS) Geographical Information System (GIS) team was tasked with a systematic analysis of how the proposed changes would impact them.

What did SWCS GIS team deliver?

Sophisticated Geographical Information System (GIS) analytics methodology using **Visography® TRACC**.

- A comprehensive travel time analysis covering emergency vehicles, private and public transport options and implications
- The revelation that clinical benefits of closing Yeovil would be much less than had been anticipated – in fact the effect of added travel times on speed of treatment for stroke patients would be crucially impacted
- Critical evidence informing the decision of Somerset CCG to retain both stroke services – a dramatically altered change of direction for the review

SWCS GIS add value to the customer by using Visography®

SWCS GIS delivered a solidly evidence-based analysis for Somerset CCG indicating that best clinical outcomes within available resources would be gained by taking the opposite approach to that anticipated by the ongoing review process.

Visography® TRACC offered marked visualisation benefits, enabling complex information on travel times, for example, to be conveyed to stakeholders in a readily comprehensible way.

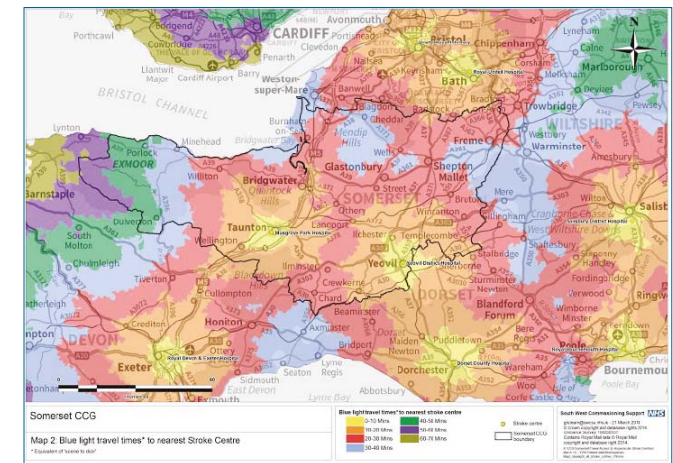
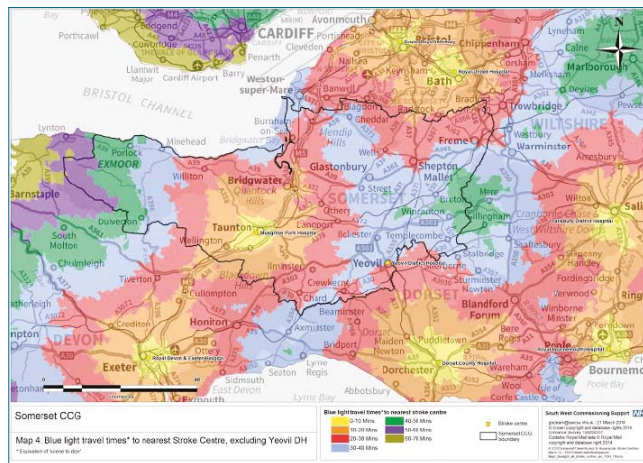
The methodology and techniques used can be easily replicated in other geographical areas in the UK in the support of service reviews and commissioning decisions; in fact, the GIS team have been involved in several subsequent reviews, their expertise justifiably gaining recognition and respect.

For demonstrations contact:

Bernard Stebbing

Business Development Manager UK & Ireland

T +44 (0) 1483 688475



For further information visit www.basemap.co.uk

Basemap Ltd

The Surrey Research Park, 40 Occam Road,
Guildford, Surrey, GU2 7YG

T +44 (0) 1483 688471



national
transport awards

Highly Commended (Excellence in Technology 2014)

